

# GALVA LUMBER ADDITION

## TO THE CITY OF GALVA, McPHERSON COUNTY, KANSAS

**LEGAL DESCRIPTION**

A tract of land in the Northeast Quarter of Section 21, Township 19 South, Range 2 West of the Sixth Principal Meridian, McPherson County, Kansas. Commencing at the Southeast corner of said Northeast Quarter; thence N 00°00'00" E (assumed) along the East line of said Northeast Quarter for 122.20 feet; thence N 89°50'41" W for 830.0 feet to the Point of Beginning, said point being on the West line of Santa Fe Street and on the North Right-of-Way line of the Chicago Rock Island and Pacific Railroad; thence N 89°50'41" W along said railroad Right-of-Way line for 530.0 feet; thence N 00°00'00" E for 910.0 feet; thence N 90°00'00" E for 530.0 feet; thence S 00°00'00" W for 911.43 feet to the Point of Beginning. Said tract containing 11.08 acres more or less.

**SURVEYOR'S CERTIFICATE**

I hereby certify this plat to be a true, correct and complete representation of the property described hereon, and that the Lot, Block and Subdivision corners and curve points have been established and marked with permanent monuments as shown hereon, as surveyed under my supervision on the 14<sup>th</sup> day of May, 1996.

*Doug Mathoone*  
Doug Mathoone L.S. 1117  
KANSAS LAND SURVEYOR

**DEDICATION**

The undersigned, Galva Lumber Inc., Lowell Williams, President do hereby certify that they are the owners of the property described hereon and have subdivided the same into Lots and Blocks in the manner shown on the accompanying plat. Said subdivision shall be known as 'Galva Lumber Addition' to the City of Galva, McPherson County, Kansas.

*Galva Lumber Inc. Lowell Williams*  
Galva Lumber Inc. Lowell Williams President

**NOTARY PUBLIC CERTIFICATE**

STATE OF KANSAS )  
                          )SS  
COUNTY OF MCPHERSON)

The foregoing instrument was acknowledged before me this 14<sup>th</sup> day of May, 1996 A.D. by Galva Lumber Inc., Lowell Williams, President.

*Jeff R. Warren*  
Notary Public

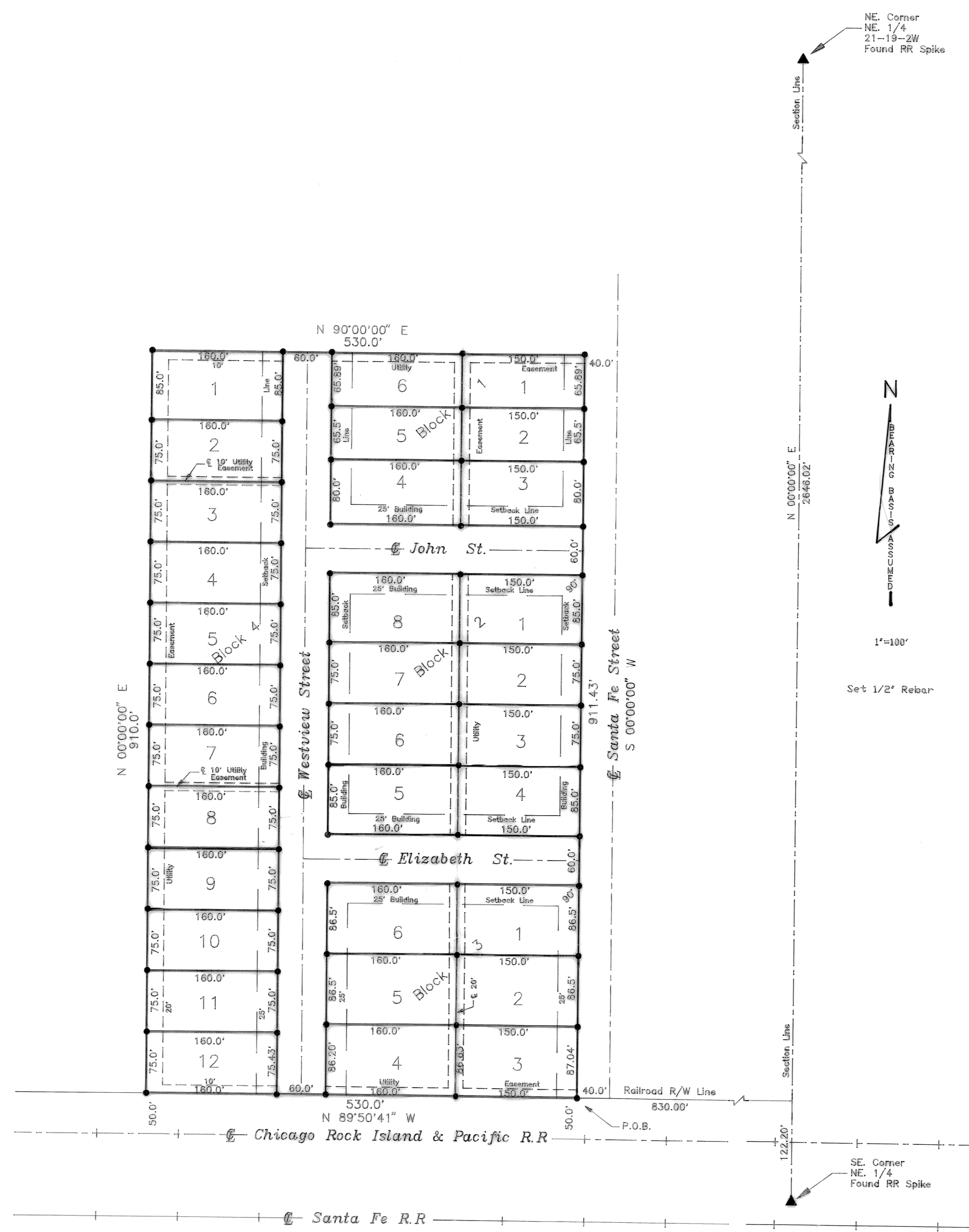


**EASEMENTS**

Easements shown by dashed lines on the accompanying plat are hereby dedicated for public use and may be employed as a covenant running with the land for the purpose of installing, repairing, reinstalling, replacing and maintaining sewer lines, water lines, gas lines, electric lines, and poles, telephone lines and poles and other forms and types of public utilities now or hereafter generally utilized by the public. A twelve (12) foot temporary construction easement is also provided on each side of aforementioned easements for the initial construction of water and sewer lines and other utilities.

**BUILDING LINES**

Building lines or setback lines are hereby established as shown on the accompanying plat and no building or portion thereof shall be built or constructed between this line and the street line.



**GOVERNING BODY CERTIFICATE**

STATE OF KANSAS )  
                          )SS  
COUNTY OF MCPHERSON)

The dedications shown on this plat are hereby accepted and this plat is hereby approved by the City Commission of the City of Galva, Kansas.

*H.W. Ford*  
H.W. Ford Mayor

*Connie Thiessen*  
Connie Thiessen Clerk

**CITY ATTORNEY'S CERTIFICATE**

STATE OF KANSAS )  
                          )SS  
COUNTY OF MCPHERSON)

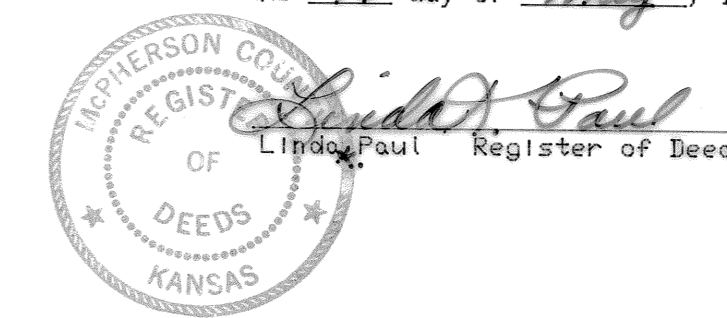
This plat of 'Galva Lumber Addition to the City of Galva', has been submitted to me and the same is hereby approved this 13 day of May, 1996.

*Harry Weelbeorg*  
Harry Weelbeorg City Attorney

**REGISTER OF DEEDS CERTIFICATE**

STATE OF KANSAS )  
                          )SS  
COUNTY OF MCPHERSON)

This is to certify that this instrument was filed for record in the Register of Deeds Office on the 14 day of May, 1996 at 2:12 P.M. and the same is duly recorded in Book 2307, Page 36.



Entered on Transfer Record this 15th day of May, 1996.

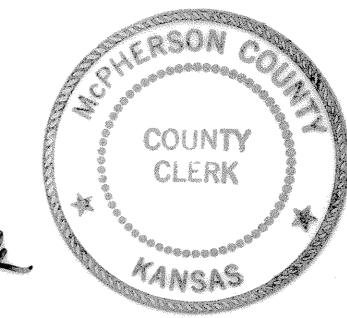
*Susan R. Meng*  
Susan R. Meng, County Clerk

**COUNTY CLERK'S CERTIFICATE**

I do hereby certify that at the time of this certificate, all currently due and owing taxes and special assessments have been paid.

May 15, 1996

*Susan R. Meng*  
McPherson County Clerk



**LAND MEASUREMENT INC.**  
A Macon Company Affiliate  
200 E. FOURTH  
NEWTON, KANSAS 67114  
316-283-7000

PROJECT NO. 991736 05/13/96  
Dwg By: WDE Rev:  
Drawing Name: 991736.Dwg View 2